



US008872646B2

(12) **United States Patent**
Kahn et al.

(10) **Patent No.:** **US 8,872,646 B2**
(45) **Date of Patent:** **Oct. 28, 2014**

(54) **METHOD AND SYSTEM FOR WAKING UP A DEVICE DUE TO MOTION**

5,313,060 A 5/1994 Gast et al.
5,386,210 A 1/1995 Lee
5,430,480 A 7/1995 Allen et al.
5,446,725 A 8/1995 Ishiwatari
5,446,775 A 8/1995 Wright et al.
5,454,114 A 9/1995 Yach et al.
5,485,402 A 1/1996 Smith et al.
5,506,987 A 4/1996 Abramson et al.
5,515,419 A 5/1996 Sheffer
5,583,776 A 12/1996 Levi et al.
5,593,431 A 1/1997 Sheldon
5,654,619 A 8/1997 Iwashita

(75) Inventors: **Philippe Kahn**, Santa Cruz, CA (US);
Arthur Kinsolving, Santa Cruz, CA (US);
David Vogel, Santa Cruz, CA (US);
Mark Andrew Christensen, Santa Cruz, CA (US)

(73) Assignee: **DP Technologies, Inc.**, Scotts Valley, CA (US)

(Continued)

(*) Notice: Subject to any disclaimer, the term of this patent is extended or adjusted under 35 U.S.C. 154(b) by 551 days.

FOREIGN PATENT DOCUMENTS

EP 1 104 143 5/2001
EP 0 833 537 7/2002

(21) Appl. No.: **12/247,950**

(Continued)

(22) Filed: **Oct. 8, 2008**

OTHER PUBLICATIONS

(65) **Prior Publication Data**

US 2010/0085203 A1 Apr. 8, 2010

Ang, Wei Tech, et al, "Zero Phase Filtering for Active Compensation of Periodic Physiological Motion," Proc 1st IEEE / RAS-EMBS International Conference on Biomedical Robotics and Biomechatronics, Feb. 20-22, 2006, pp. 182-187.

(51) **Int. Cl.**
B60Q 1/00 (2006.01)

(Continued)

(52) **U.S. Cl.**
USPC **340/457; 340/573.1**

Primary Examiner — Shirley Lu
(74) *Attorney, Agent, or Firm* — HIPLegal LLP; Judith A. Szepesi

(58) **Field of Classification Search**
USPC 340/669, 457, 573.1, 686.1, 539.1, 522, 340/667; 702/141; 345/325, 156
IPC G01C 1/00; G06F 1/00
See application file for complete search history.

(57) **ABSTRACT**

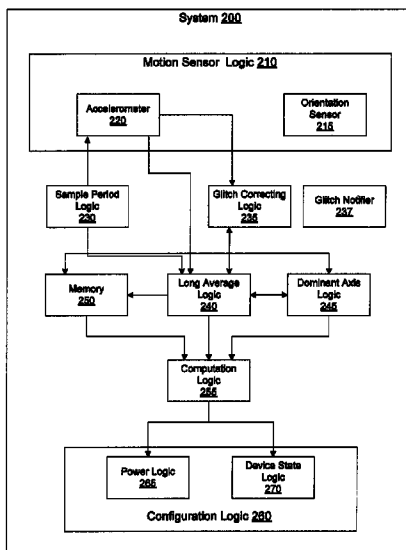
A method comprises determining an idle sample value for a dominant axis of a device in an idle state. The method further comprises registering a motion of the device, and evaluating the motion. The method further comprises waking up the device when the analysis of the motion indicates a change in the dominant axis of the device and/or a level of acceleration beyond a threshold.

(56) **References Cited**

U.S. PATENT DOCUMENTS

4,285,041 A 8/1981 Smith
4,571,680 A 2/1986 Wu
4,578,769 A 3/1986 Frederick
4,700,369 A 10/1987 Seigal et al.
4,776,323 A 10/1988 Spector

22 Claims, 7 Drawing Sheets



(56)

References Cited

U.S. PATENT DOCUMENTS

5,737,439 A	4/1998	Lapsley et al.	7,173,604 B2	2/2007	Marvit et al.
5,771,001 A	6/1998	Cobb	7,176,886 B2	2/2007	Marvit et al.
5,778,882 A	7/1998	Raymond et al.	7,176,887 B2	2/2007	Marvit et al.
5,911,065 A	6/1999	Williams et al.	7,176,888 B2	2/2007	Marvit et al.
5,955,667 A	9/1999	Fyfe	7,177,684 B1	2/2007	Kroll et al.
5,960,085 A	9/1999	de la Huerga	7,180,500 B2	2/2007	Marvit et al.
5,976,083 A	11/1999	Richardson et al.	7,180,501 B2	2/2007	Marvit et al.
6,013,007 A	1/2000	Root et al.	7,180,502 B2	2/2007	Marvit et al.
6,061,456 A	5/2000	Andrea et al.	7,212,230 B2	5/2007	Stavely
6,122,595 A	9/2000	Varley et al.	7,212,943 B2	5/2007	Aoshima et
6,129,686 A	10/2000	Friedman	7,220,220 B2	5/2007	Stubbs et al.
6,135,951 A	10/2000	Richardson et al.	7,245,725 B1	7/2007	Beard
6,145,389 A	11/2000	Ebeling et al.	7,254,516 B2	8/2007	Case et al.
6,246,321 B1	6/2001	Rechsteiner et al.	7,280,096 B2	10/2007	Marvit et al.
6,282,496 B1	8/2001	Chowdhary	7,297,088 B2	11/2007	Tsuji
6,353,449 B1 *	3/2002	Gregg et al. 715/762	7,301,526 B2	11/2007	Marvit et al.
6,369,794 B1	4/2002	Sakurai et al.	7,301,527 B2	11/2007	Marvit et al.
6,396,883 B2	5/2002	Yang et al.	7,301,528 B2	11/2007	Marvit et al.
6,408,330 B1	6/2002	DeLaHuerga	7,301,529 B2	11/2007	Marvit et al.
6,428,490 B1	8/2002	Kramer et al.	7,305,323 B2	12/2007	Skvortsov et al.
6,470,147 B1	10/2002	Imada	7,334,472 B2	2/2008	Seo et al.
6,478,736 B1	11/2002	Mault	7,343,260 B1	3/2008	Kahn
6,493,652 B1	12/2002	Ohlenbusch et al.	7,353,112 B2	4/2008	Choi et al.
6,496,695 B1	12/2002	Kouji et al.	7,365,735 B2	4/2008	Reinhardt et al.
6,513,381 B2	2/2003	Fyfe et al.	7,365,736 B2	4/2008	Marvit et al.
6,522,266 B1	2/2003	Soehren et al.	7,365,737 B2	4/2008	Marvit et al.
6,529,144 B1	3/2003	Nilsen et al.	7,379,999 B1	5/2008	Zhou et al.
6,532,419 B1	3/2003	Begin et al.	7,382,611 B2	6/2008	Tracy et al.
6,539,336 B1	3/2003	Vock et al.	7,387,611 B2	6/2008	Inoue et al.
6,595,929 B2	7/2003	Stivoric et al.	7,397,357 B2	7/2008	Krumm et al.
6,607,493 B2	8/2003	Song	7,428,471 B2	9/2008	Darley et al.
6,611,789 B1	8/2003	Darley	7,451,056 B2	11/2008	Flentov et al.
6,628,898 B2	9/2003	Endo	7,457,719 B1	11/2008	Kahn et al.
6,634,992 B1	10/2003	Ogawa	7,457,872 B2	11/2008	Aton et al.
6,665,802 B1	12/2003	Ober	7,463,997 B2	12/2008	Pasolini et al.
6,672,991 B2	1/2004	O'Malley	7,467,060 B2	12/2008	Kulach et al.
6,685,480 B2	2/2004	Nishimoto et al.	7,489,937 B2	2/2009	Chung et al.
6,700,499 B2	3/2004	Kubo et al.	7,502,643 B2	3/2009	Farrington et al.
6,731,958 B1	5/2004	Shirai	7,512,515 B2	3/2009	Vock et al.
6,766,176 B1	7/2004	Gupta et al.	7,526,402 B2	4/2009	Tanenhaus et al.
6,771,250 B1 *	8/2004	Oh 345/156	7,608,050 B2	10/2009	Sugg
6,786,877 B2	9/2004	Foxlin	7,617,071 B2	11/2009	Darley et al.
6,788,980 B1	9/2004	Johnson	7,640,134 B2	12/2009	Park et al.
6,790,178 B1	9/2004	Mault et al.	7,640,804 B2	1/2010	Daumer et al.
6,813,582 B2	11/2004	Levi et al.	7,647,195 B1	1/2010	Kahn
6,823,036 B1	11/2004	Chen	7,647,196 B2	1/2010	Kahn et al.
6,826,477 B2	11/2004	Ladetto et al.	7,653,508 B1	1/2010	Kahn
6,836,744 B1	12/2004	Asphahani et al.	7,664,657 B1	2/2010	Letzt et al.
6,881,191 B2	4/2005	Oakley et al.	7,689,107 B2	3/2010	Enomoto
6,885,971 B2	4/2005	Vock et al.	7,705,884 B2	4/2010	Pinto et al.
6,895,425 B1	5/2005	Kadyk et al.	7,752,011 B2	7/2010	Niva et al.
6,898,550 B1	5/2005	Blackadar et al.	7,753,861 B1	7/2010	Kahn et al.
6,928,382 B2	8/2005	Hong et al.	7,765,553 B2	7/2010	Douceur et al.
6,941,239 B2	9/2005	Unuma et al.	7,774,156 B2	8/2010	Niva et al.
6,959,259 B2	10/2005	Vock et al.	7,788,059 B1	8/2010	Kahn et al.
6,975,959 B2	12/2005	Dietrich et al.	7,857,772 B2	12/2010	Bouvier et al.
7,002,553 B2	2/2006	Shkolnikov	7,881,902 B1	2/2011	Kahn
7,010,332 B1	3/2006	Irvin et al.	7,889,085 B2	2/2011	Downey et al.
7,020,487 B2	3/2006	Kimata	7,892,080 B1	2/2011	Dahl
7,027,087 B2	4/2006	Nozaki et al.	7,917,768 B2	3/2011	Kahn
7,028,547 B2	4/2006	Shiratori et al.	7,962,312 B2	6/2011	Darley et al.
7,042,509 B2	5/2006	Onuki	7,987,070 B2	7/2011	Kahn
7,054,784 B2	5/2006	Flentov et al.	8,140,115 B1	3/2012	Kahn
7,057,551 B1	6/2006	Vogt	8,187,182 B2	5/2012	Kahn
7,072,789 B2	7/2006	Vock et al.	8,275,635 B2	9/2012	Stivoric et al.
7,092,846 B2	8/2006	Vock et al.	8,285,344 B2	10/2012	Kahn
7,096,619 B2	8/2006	Jackson et al.	8,320,578 B2	11/2012	Kahn
7,148,797 B2	12/2006	Albert	8,398,546 B2	3/2013	Pacione et al.
7,148,879 B2	12/2006	Amento et al.	8,555,282 B1	10/2013	Kahn
7,149,964 B1	12/2006	Cottrille et al.	8,568,310 B2	10/2013	Kahn
7,155,507 B2	12/2006	Hirano et al.	8,725,527 B1	5/2014	Kahn
7,158,912 B2	1/2007	Vock et al.	2001/0047488 A1	11/2001	Verplaetse et al.
7,169,084 B2	1/2007	Tsuji	2002/0006284 A1	1/2002	Kim
7,171,222 B2	1/2007	Fostick	2002/0023654 A1	2/2002	Webb
7,171,331 B2	1/2007	Vock et al.	2002/0027164 A1	3/2002	Mault et al.
			2002/0042830 A1	4/2002	Bose et al.
			2002/0044634 A1	4/2002	Rooke et al.
			2002/0054214 A1	5/2002	Yoshikawa
			2002/0089425 A1	7/2002	Kubo et al.

(56)

References Cited

U.S. PATENT DOCUMENTS

2002/0109600 A1	8/2002	Mault et al.	2005/0131736 A1	6/2005	Nelson et al.
2002/0118121 A1	8/2002	Lehrman et al.	2005/0141522 A1	6/2005	Kadar et al.
2002/0122543 A1	9/2002	Rowen	2005/0143106 A1	6/2005	Chan et al.
2002/0138017 A1	9/2002	Bui et al.	2005/0146431 A1	7/2005	Hastings et al.
2002/0142887 A1	10/2002	O'Malley	2005/0157181 A1	7/2005	Kawahara et al.
2002/0150302 A1	10/2002	McCarthy et al.	2005/0165719 A1	7/2005	Greenspan et al.
2002/0151810 A1	10/2002	Wong et al.	2005/0168587 A1	8/2005	Sato et al.
2002/0173295 A1	11/2002	Nykanen et al.	2005/0182824 A1	8/2005	Cotte
2002/0190947 A1	12/2002	Feinstein	2005/0183086 A1	8/2005	Abe et al.
2002/0193124 A1	12/2002	Hamilton et al.	2005/0202934 A1	9/2005	Olrik et al.
2003/0018430 A1	1/2003	Ladetto et al.	2005/0203430 A1	9/2005	Williams et al.
2003/0033411 A1	2/2003	Kavoori et al.	2005/0210300 A1	9/2005	Song et al.
2003/0048218 A1	3/2003	Milnes et al.	2005/0212751 A1	9/2005	Marvit et al.
2003/0083596 A1	5/2003	Kramer et al.	2005/0212752 A1	9/2005	Marvit et al.
2003/0093187 A1	5/2003	Walker	2005/0212753 A1	9/2005	Marvit et al.
2003/0101260 A1	5/2003	Dacier et al.	2005/0212760 A1	9/2005	Marvit et al.
2003/0109258 A1	6/2003	Mantjarvi et al.	2005/0216403 A1	9/2005	Tam et al.
2003/0139692 A1	7/2003	Barrey et al.	2005/0222801 A1	10/2005	Wulff et al.
2003/0139908 A1	7/2003	Wegerich et al.	2005/0232388 A1	10/2005	Tsuji
2003/0149526 A1	8/2003	Zhou et al.	2005/0232404 A1	10/2005	Gaskill
2003/0151672 A1	8/2003	Robins et al.	2005/0234676 A1	10/2005	Shibayama
2003/0187683 A1	10/2003	Kirchhoff et al.	2005/0235058 A1	10/2005	Rackus et al.
2003/0208110 A1	11/2003	Mault et al.	2005/0238132 A1	10/2005	Tsuji
2003/0208113 A1	11/2003	Mault et al.	2005/0240375 A1	10/2005	Sugai
2003/0227487 A1	12/2003	Hugh	2005/0243178 A1	11/2005	McConica
2003/0236625 A1	12/2003	Brown et al.	2005/0245988 A1	11/2005	Miesel
2004/0017300 A1	1/2004	Kotzin et al.	2005/0248718 A1	11/2005	Howell et al.
2004/0024846 A1	2/2004	Randall et al.	2005/0256414 A1	11/2005	Kettunen et al.
2004/0043760 A1	3/2004	Rosenfeld et al.	2005/0258938 A1	11/2005	Moulson
2004/0044493 A1	3/2004	Coulthard	2005/0262237 A1	11/2005	Fulton et al.
2004/0047498 A1	3/2004	Mulet-Parada et al.	2005/0281289 A1	12/2005	Huang et al.
2004/0078219 A1	4/2004	Kaylor et al.	2006/0009243 A1	1/2006	Dahan et al.
2004/0078220 A1	4/2004	Jackson	2006/0017692 A1	1/2006	Wehrenberg et al.
2004/0081441 A1	4/2004	Sato et al.	2006/0020177 A1	1/2006	Seo et al.
2004/0106421 A1	6/2004	Tomiyoshi et al.	2006/0029284 A1	2/2006	Stewart
2004/0106958 A1	6/2004	Mathis et al.	2006/0063980 A1	3/2006	Hwang et al.
2004/0122294 A1	6/2004	Hatlestad et al.	2006/0064276 A1	3/2006	Ren et al.
2004/0122295 A1	6/2004	Hatlestad et al.	2006/0080551 A1	4/2006	Mantjarvi et al.
2004/0122296 A1	6/2004	Hatlestad et al.	2006/0090088 A1	4/2006	Choi et al.
2004/0122297 A1	6/2004	Hatlestad et al.	2006/0090161 A1	4/2006	Bodas et al.
2004/0122333 A1	6/2004	Hatlestad et al.	2006/0098097 A1	5/2006	Wach et al.
2004/0122484 A1	6/2004	Hatlestad et al.	2006/0100546 A1	5/2006	Silk
2004/0122485 A1	6/2004	Hatlestad et al.	2006/0109113 A1	5/2006	Reyes et al.
2004/0122486 A1	6/2004	Hatlestad et al.	2006/0136173 A1	6/2006	Case, Jr. et al.
2004/0122487 A1	6/2004	Hatlestad et al.	2006/0149516 A1	7/2006	Bond et al.
2004/0125073 A1	7/2004	Potter et al.	2006/0154642 A1	7/2006	Scannell, Jr.
2004/0130628 A1	7/2004	Stavely	2006/0161377 A1*	7/2006	Rakkola et al. 702/141
2004/0135898 A1	7/2004	Zador	2006/0161459 A9	7/2006	Rosenfeld et al.
2004/0146048 A1	7/2004	Cotte	2006/0167387 A1	7/2006	Buchholz et al.
2004/0148340 A1	7/2004	Cotte	2006/0167647 A1	7/2006	Krumm et al.
2004/0148341 A1	7/2004	Cotte	2006/0167943 A1	7/2006	Rosenberg
2004/0148342 A1	7/2004	Cotte	2006/0172706 A1	8/2006	Griffin et al.
2004/0148351 A1	7/2004	Cotte	2006/0174685 A1	8/2006	Skvortsov et al.
2004/0172167 A1	9/2004	Pasolini et al.	2006/0201964 A1	9/2006	DiPerna et al.
2004/0176067 A1	9/2004	Lakhani et al.	2006/0204214 A1	9/2006	Shah et al.
2004/0185821 A1	9/2004	Yuasa	2006/0205406 A1	9/2006	Pekonen et al.
2004/0219910 A1	11/2004	Beckers	2006/0206258 A1	9/2006	Brooks
2004/0225467 A1	11/2004	Vock et al.	2006/0223547 A1	10/2006	Chin et al.
2004/0236500 A1	11/2004	Choi et al.	2006/0249683 A1	11/2006	Goldberg et al.
2004/0242202 A1	12/2004	Torvinen	2006/0256082 A1	11/2006	Cho et al.
2004/0247030 A1	12/2004	Wiethoff	2006/0257042 A1	11/2006	Ofek et al.
2004/0259494 A1	12/2004	Mazar	2006/0259268 A1	11/2006	Vock et al.
2005/0015768 A1	1/2005	Moore	2006/0288781 A1	12/2006	Daumer et al.
2005/0027567 A1	2/2005	Taha	2006/0289819 A1	12/2006	Parsons et al.
2005/0033200 A1	2/2005	Soehren et al.	2007/0004451 A1	1/2007	Anderson
2005/0038691 A1	2/2005	Babu	2007/0005988 A1	1/2007	Zhengyou et al.
2005/0048945 A1	3/2005	Porter	2007/0017136 A1	1/2007	Mosher et al.
2005/0048955 A1	3/2005	Ring	2007/0024441 A1	2/2007	Kahn et al.
2005/0078197 A1	4/2005	Gonzales	2007/0037605 A1	2/2007	Logan et al.
2005/0079873 A1	4/2005	Caspi et al.	2007/0037610 A1	2/2007	Logan
2005/0101841 A9	5/2005	Kaylor et al.	2007/0038364 A1	2/2007	Lee et al.
2005/0102167 A1	5/2005	Kapoor	2007/0040892 A1	2/2007	Aoki et al.
2005/0107944 A1	5/2005	Hovestadt et al.	2007/0050157 A1	3/2007	Kahn et al.
2005/0113649 A1	5/2005	Bergantino	2007/0061105 A1	3/2007	Darley et al.
2005/0113650 A1	5/2005	Pacione et al.	2007/0063850 A1	3/2007	Devaul et al.
			2007/0067094 A1	3/2007	Park et al.
			2007/0073482 A1	3/2007	Churchill et al.
			2007/0075127 A1	4/2007	Rosenberg
			2007/0075965 A1	4/2007	Huppi et al.

(56)

References Cited

U.S. PATENT DOCUMENTS

2007/0078324 A1 4/2007 Wijisiriwardana
 2007/0082789 A1 4/2007 Nissila et al.
 2007/0102525 A1 5/2007 Orr et al.
 2007/0104479 A1 5/2007 Machida
 2007/0106991 A1 5/2007 Yoo
 2007/0125852 A1 6/2007 Rosenberg
 2007/0130582 A1 6/2007 Chang et al.
 2007/0142715 A1 6/2007 Banet et al.
 2007/0143068 A1 6/2007 Pasolini et al.
 2007/0145680 A1 6/2007 Rosenberg
 2007/0150136 A1* 6/2007 Doll et al. 701/34
 2007/0156364 A1 7/2007 Rothkopf
 2007/0161410 A1 7/2007 Huang et al.
 2007/0165790 A1 7/2007 Taori
 2007/0169126 A1 7/2007 Todoroki et al.
 2007/0176898 A1 8/2007 Suh
 2007/0192483 A1 8/2007 Rezvani et al.
 2007/0195784 A1 8/2007 Allen et al.
 2007/0208531 A1 9/2007 Darley et al.
 2007/0208544 A1 9/2007 Kulach et al.
 2007/0213085 A1 9/2007 Fedora
 2007/0213126 A1 9/2007 Deutsch et al.
 2007/0233788 A1 10/2007 Bender
 2007/0239399 A1 10/2007 Sheynblat et al.
 2007/0250261 A1 10/2007 Soehren
 2007/0259685 A1 11/2007 Engblom et al.
 2007/0259716 A1* 11/2007 Mattice et al. 463/36
 2007/0259717 A1 11/2007 Mattice et al.
 2007/0260418 A1 11/2007 Ladetto et al.
 2007/0260482 A1 11/2007 Nurmela et al.
 2007/0263995 A1 11/2007 Park et al.
 2007/0296696 A1 12/2007 Nurmi
 2008/0005738 A1 1/2008 Imai et al.
 2008/0030586 A1 2/2008 Helbing et al.
 2008/0046888 A1 2/2008 Appaji
 2008/0052716 A1 2/2008 Theurer
 2008/0072014 A1 3/2008 Krishnan et al.
 2008/0102785 A1 5/2008 Childress et al.
 2008/0113689 A1 5/2008 Bailey
 2008/0140338 A1 6/2008 No et al.
 2008/0153671 A1 6/2008 Ogg et al.
 2008/0161072 A1 7/2008 Lide et al.
 2008/0165022 A1 7/2008 Herz et al.
 2008/0168361 A1 7/2008 Forstall et al.
 2008/0171918 A1 7/2008 Teller et al.
 2008/0214358 A1 9/2008 Ogg et al.
 2008/0231713 A1 9/2008 Florea et al.
 2008/0231714 A1 9/2008 Estevez et al.
 2008/0232604 A1 9/2008 Dufresne et al.
 2008/0243432 A1 10/2008 Kato et al.
 2008/0303681 A1 12/2008 Herz et al.
 2008/0311929 A1 12/2008 Carro et al.
 2009/0017880 A1 1/2009 Moore et al.
 2009/0031319 A1 1/2009 Fecioru
 2009/0043531 A1 2/2009 Kahn et al.
 2009/0047645 A1 2/2009 Dibenedetto et al.
 2009/0067826 A1 3/2009 Shinohara et al.
 2009/0082994 A1 3/2009 Schuler et al.
 2009/0088204 A1 4/2009 Culbert et al.
 2009/0098880 A1 4/2009 Lindquist
 2009/0099668 A1 4/2009 Lehman et al.
 2009/0124348 A1 5/2009 Yoseloff et al.
 2009/0128448 A1 5/2009 Riechel
 2009/0174782 A1 7/2009 Kahn et al.
 2009/0213002 A1 8/2009 Rani et al.
 2009/0215502 A1 8/2009 Griffin, Jr.
 2009/0234614 A1 9/2009 Kahn et al.
 2009/0274317 A1 11/2009 Kahn et al.
 2009/0296951 A1 12/2009 De Haan
 2009/0319221 A1 12/2009 Kahn et al.
 2009/0325705 A1 12/2009 Filer et al.
 2010/0056872 A1 3/2010 Kahn et al.
 2010/0057398 A1 3/2010 Darley et al.
 2010/0199189 A1 8/2010 Ben-Aroya et al.

2010/0245131 A1 9/2010 Graumann
 2010/0277489 A1 11/2010 Geisner et al.
 2010/0283742 A1 11/2010 Lam

FOREIGN PATENT DOCUMENTS

EP 1271099 A2 1/2003
 GB 2431813 A 5/2007
 JP 7020547 A 1/1995
 JP 2000-90069 3/2000
 JP 2001-057695 2/2001
 JP 2001-79699 3/2001
 JP 2003-014459 1/2003
 JP 2003-143683 5/2003
 JP 2005-309691 A 11/2005
 JP 2006-026092 2/2006
 JP 2006-118909 5/2006
 JP 2006-239398 9/2006
 JP 2007-080219 3/2007
 JP 2007-093433 4/2007
 JP 2007-104670 4/2007
 JP 2007-142611 6/2007
 JP 2007-206748 8/2007
 JP 2007-215784 8/2007
 JP 2007-226855 9/2007
 JP 2008-173248 7/2008
 WO WO 99/22338 5/1999
 WO WO 00/63874 10/2000
 WO WO 01/88477 A2 11/2001
 WO WO 02/088926 11/2002
 WO WO 2006/008790 7/2004

OTHER PUBLICATIONS

Lee, Hyunseok, et al, A Dual Processor Solution for the MAC Layer of a Software Defined Radio Terminal, Advanced Computer Architecture Laboratory, University of Michigan, 25 pages.
 Weinberg, Harvey, "Minimizing Power Consumption of iMEMS® Accelerometers," Analog Devices, <http://www.analog.com/static/imported-files/application_notes/5935151853362884599AN601.pdf>, 2002, 5 pages.
 Zypad WL 1100 Wearable Computer, <http://www.eurotech.fi/products/manuals/Zypad%20WL%201100_sf.pdf>, Jan. 16, 2008, 2 pgs.
 The International Search Report and the Written Opinion, PCT/US2009/059900, mailing date Mar. 31, 2010, 9 pages.
 Anderson, Ian, et al, "Shakra: Tracking and Sharing Daily Activity Levels with Unaugmented Mobile Phones," Mobile Netw Appl, Aug. 3, 2007, pp. 185-199.
 Aylward, Ryan, et al, "Senseble: A Wireless, Compact, Multi-User Sensor System for Interactive Dance," International Conference on New Interfaces for Musical Expression (NIME06), Jun. 4-8, 2006, pp. 134-139.
 Baca, Arnold, et al, "Rapid Feedback Systems for Elite Sports Training," IEEE Pervasive Computing, Oct.-Dec. 2006, pp. 70-76.
 Bakhru, Kesh, "A Seamless Tracking Solution for Indoor and Outdoor Position Location," IEEE 16th International Symposium on Personal, Indoor, and Mobile Radio Communications, 2005, pp. 2029-2033.
 Bliley, Kara E, et al, "A Miniaturized Low Power Personal Motion Analysis Logger Utilizing Mems Accelerometers and Low Power Microcontroller," IEEE EMBS Special Topic Conference on Microtechnologies in Medicine and Biology, May 12-15, 2005, pp. 92-93.
 Bourzac, Katherine, "Wearable Health Reports," Technology Review, Feb. 28, 2006, <http://www.techreview.com/printer_friendly_article_aspx?id+16431>, accessed Mar. 22, 2007, 3 pages.
 Cheng, Fangxiang, et al, "Periodic Human Motion Description for Sports Video Databases," Proceedings of the Pattern Recognition, 2004, 5 pages.
 Dao, Ricardo, "Inclination Sensing with Thermal Accelerometers", MEMSIC, May 2002, 3 pages.
 Fang, Lei, et al, "Design of a Wireless Assisted Pedestrian Dead Reckoning System—The NavMote Experience," IEEE Transactions on Instrumentation and Measurement, vol. 54, No. 6, Dec. 2005, pp. 2342-2358.

(56)

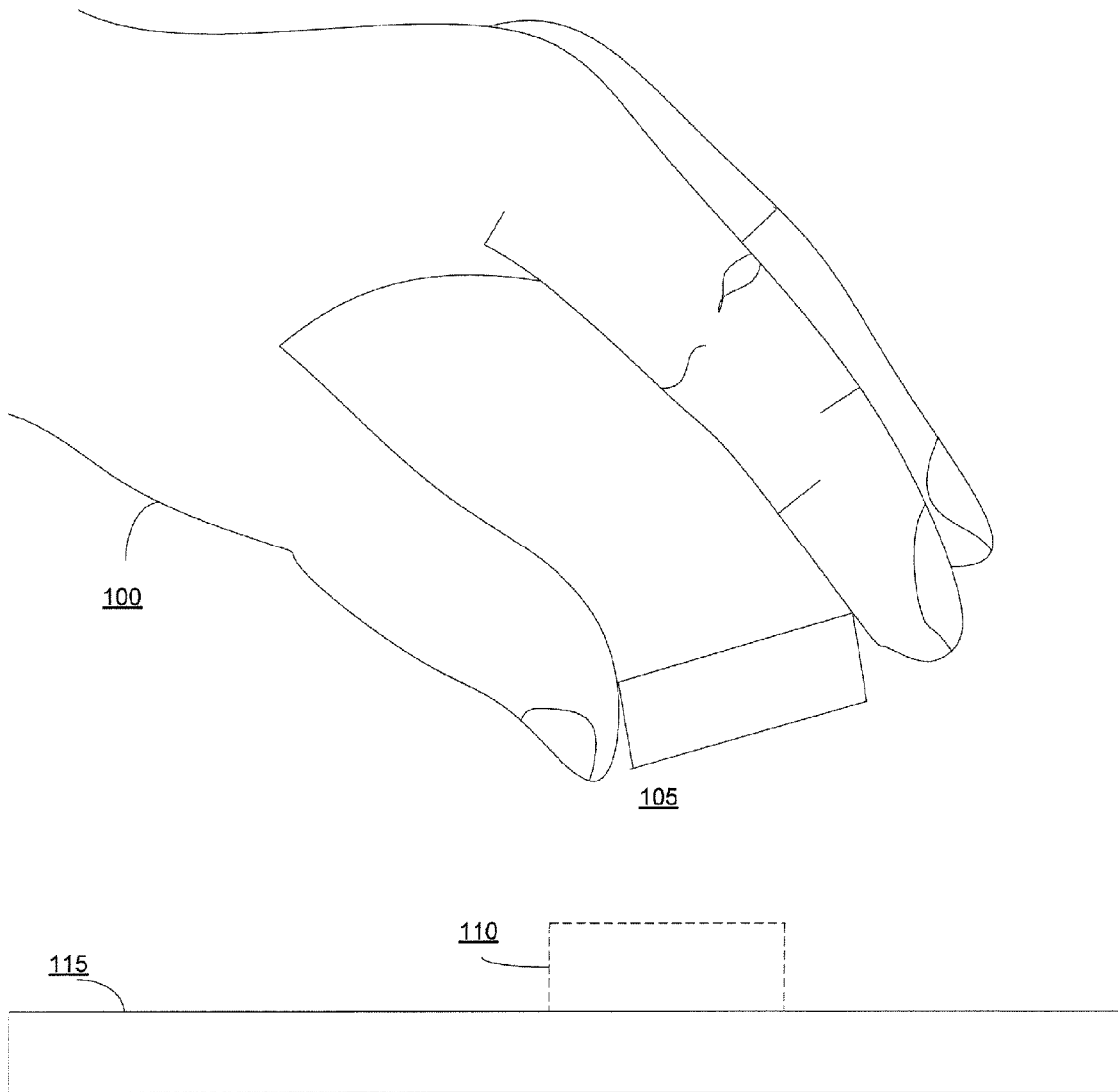
References Cited

OTHER PUBLICATIONS

- Healey, Jennifer, et al, "Wearable Wellness Monitoring Using ECG and Accelerometer Data," IEEE Int. Symposium on Wearable Computers (ISWC'05), 2005, 2 pages.
- Hemmes, Jeffrey, et al, "Lessons Learned Building TeamTrak: An Urban/Outdoor Mobile Testbed," 2007 IEEE Int. Conf. on Wireless Algorithms, Aug. 1-3, 2007, pp. 219-224.
- Jones, L, et al, "Wireless Physiological Sensor System for Ambulatory Use," <http://ieeexplore.ieee.org/xpl/freeabs_all.jsp?tp=&arnumber=1612917&isnumber=33861>, Apr. 3-5, 2006.
- Jovanov, Emil, et al, "A Wireless Body Area Network of Intelligent Motion Sensors for Computer Assisted Physical Rehabilitation," Journal of NeuroEngineering and Rehabilitation, Mar. 2005, 10 pages.
- Kalpaxis, Alex, "Wireless Temporal-Spatial Human Mobility Analysis Using Real-Time Three Dimensional Acceleration Data," IEEE Intl. Multi-Conf. on Computing in Global IT (ICCGI'07), 2007, 7 pages.
- Lee, Seon-Woo, et al., "Recognition of Walking Behaviors for Pedestrian Navigation," IEEE International Conference on Control Applications, Sep. 5-7, 2001, pp. 1152-1155.
- Margaria, Rodolfo, "Biomechanics and Energetics of Muscular Exercise", Chapter 3, Oxford: Clarendon Press, 1976, pp. 105-125.
- Milenkovic, Milena, et al, "An Accelerometer-Based Physical Rehabilitation System," IEEE SouthEastern Symposium on System Theory, 2002, pp. 57-60.
- Mizell, David, "Using Gravity to Estimate Accelerometer Orientation", Seventh IEEE International Symposium on Wearable Computers, 2003, 2 pages.
- Ormoneit, D, et al, "Learning and Tracking Cyclic Human Motion," 7 pages.
- Otto, Chris, et al, "System Architecture of a Wireless Body Area Sensor Network for Ubiquitous Health Monitoring," Journal of Mobile Multimedia, vol. 1, No. 4, 2006, pp. 307-326.
- Park, Chulsung, et al, "Eco: An Ultra-Compact Low-Power Wireless Sensor Node for Real-Time Motion Monitoring," IEEE Int. Symp. on Information Processing in Sensor Networks, 2005, pp. 398-403.
- Shen, Chien-Lung, et al, "Wearable Band Using a Fabric-Based Sensor for Exercise ECG Monitoring," IEEE Int. Symp. on Wearable Computers, 2006, 2 pages.
- "Sensor Fusion," <www.u-dynamics.com>, accessed Aug. 29, 2008, 2 pages.
- Tapia, Emmanuel Munguia, et al, "Real-Time Recognition of Physical Activities and Their Intensities Using Wireless Accelerometers and a Heart Rate Monitor," IEEE Cont. on Wearable Computers, Oct. 2007, 4 pages.
- Wang, Shu, et al, "Location Based Services for Mobiles: Technologies and Standards, LG Electronics MobileComm," IEEE ICC 2008, Beijing, pp. 1-66 (part 1 of 3).
- Wang, Shu, et al, "Location Based Services for Mobiles: Technologies and Standards, LG Electronics MobileComm," IEEE ICC 2008, Beijing, pp. 67-92 (part 2 of 3).
- Wang, Shu, et al, "Location Based Services for Mobiles: Technologies and Standards, LG Electronics MobileComm," IEEE ICC 2008, Beijing, pp. 93-123 (part 3 of 3).
- Weckesser, P, et al, "Multiple Sensorprocessing for High-Precision Navigation and Environmental Modeling with a Mobile Robot," IEEE, 1995, pp. 453-458.
- Weinberg, Harvey, "MEMSs Motion Sensors Boost Handset Reliability," <<http://www.mwrf.com/Articles/Print.cfm?ArticleID=12740>>, Jun. 2006, 3 pages.
- Wixted, Andrew J, et al, "Measurement of Energy Expenditure in Elite Athletes Using MEMS-Based Triaxial Accelerometers," IEEE Sensors Journal, vol. 7, No. 4, Apr. 2007, pp. 481-488.
- Wu, Winston H, et al, "Context-Aware Sensing of Physiological Signals," IEEE Int. Conf. on Engineering for Medicine and Biology, Aug. 23-26, 2007, pp. 5271-5275.
- Yoo, Chang-Sun, et al, "Low Cost GPS/INS Sensor Fusion System for UAV Navigation," IEEE Digital Avionics Systems Conference (DASC '03), 2003, 9 pages.
- "Heart Rate Monitor Sports Bra," <www.numetrex.com/about/heart-rate-monitor-sports-bra>, Accessed Aug. 9, 2013, 2 pages.
- "Smart Underwear With Biosensors Availability in the Market Kudos to Modern Inkjet Printer Technology," <www.kokeytechnology.com/biotechnology/smart-underwear-with-biosensors-availability-in-the-market-kudos-to-modern-inkjet-printer-technology/>, Published Jul. 21, 2010, 2 pages.
- Mein Hold, Bridgette, "Adidas by Stella McCartney's Tennis Bra Includes Built-In Heart Sensor," <www.ecouterre.com/adidas-by-stella-mccartneys-tennis-bra-includes-built-in-heart-sensor/>, Mar. 23, 2012, 2 pages.
- European Patent Application No. EP09819844.3, Office Action, Dated Oct. 11, 2013, 6 pages.
- Japanese Patent Application No. 2011-531156, Notification of Reasons for Rejection, Dispatched Dec. 2, 2013, 6 pages.
- European Patent Application No. EP09819844.3, Supplementary European Search Report, Dated Jun. 5, 2012, 10 pages.

* cited by examiner

Figure 1



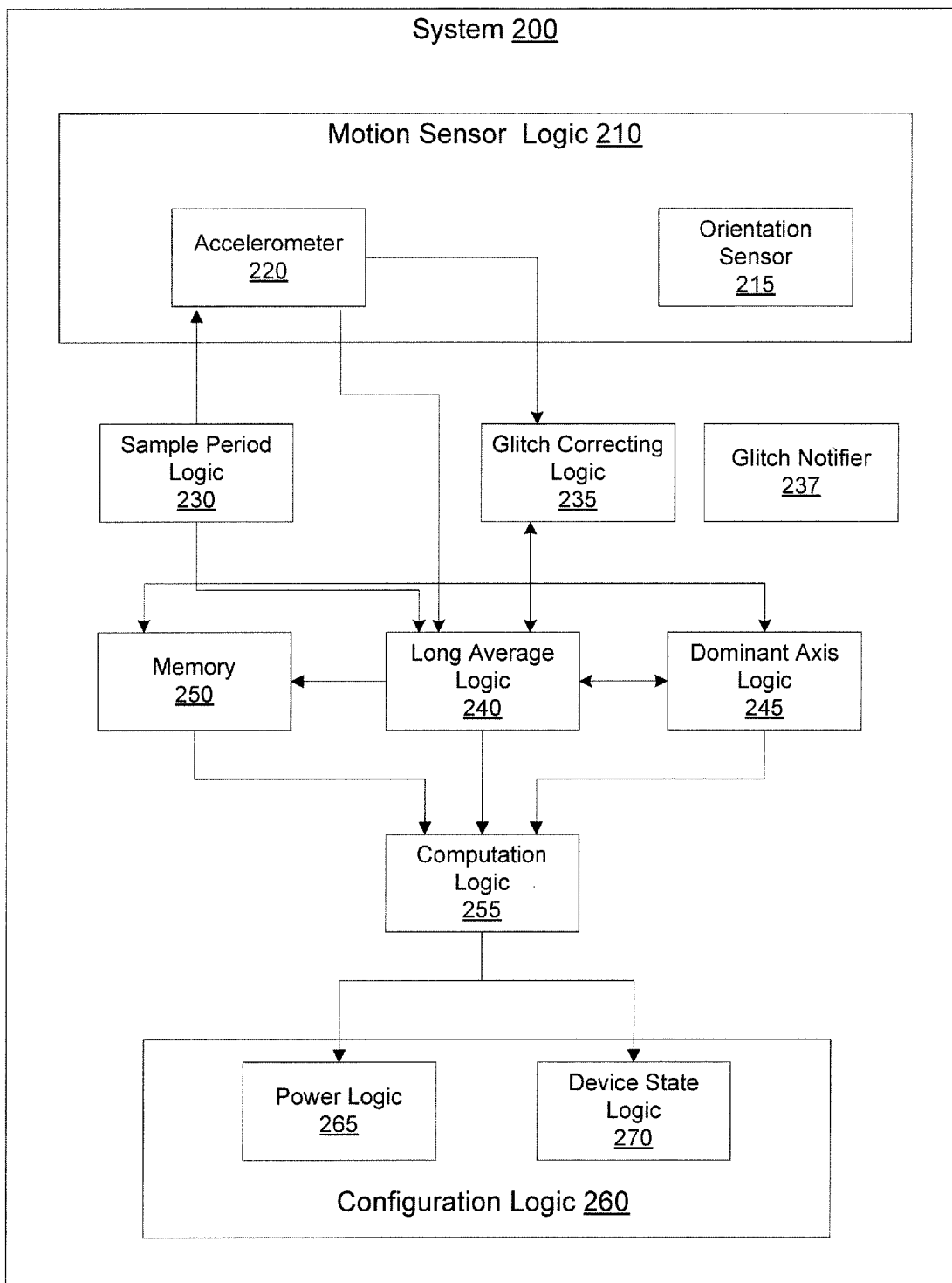


Figure 2

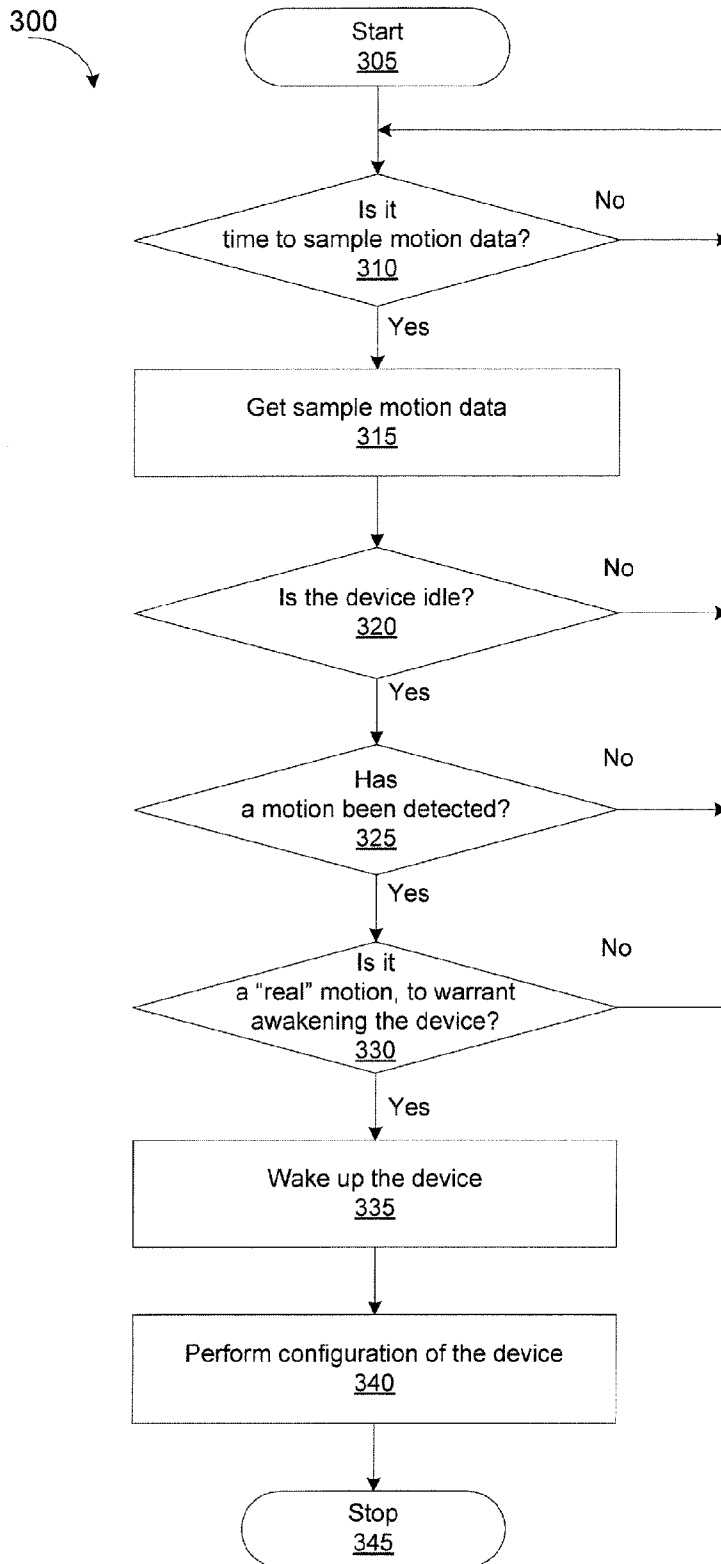


Figure 3

400

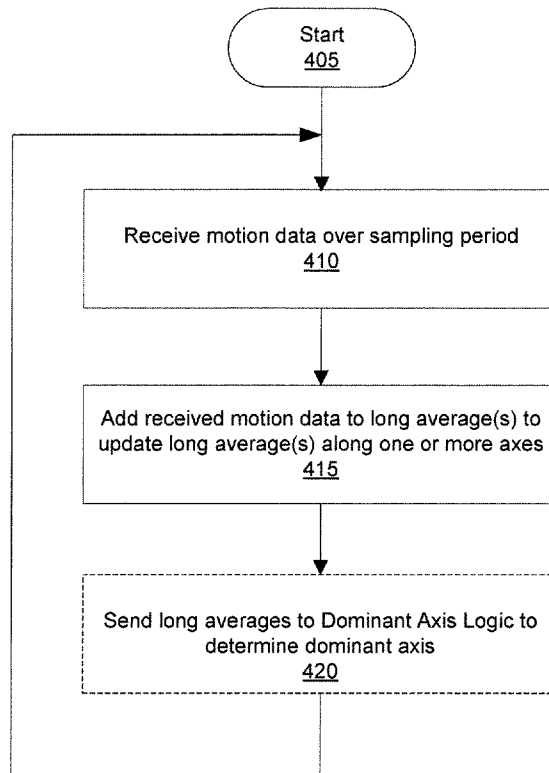


Figure 4

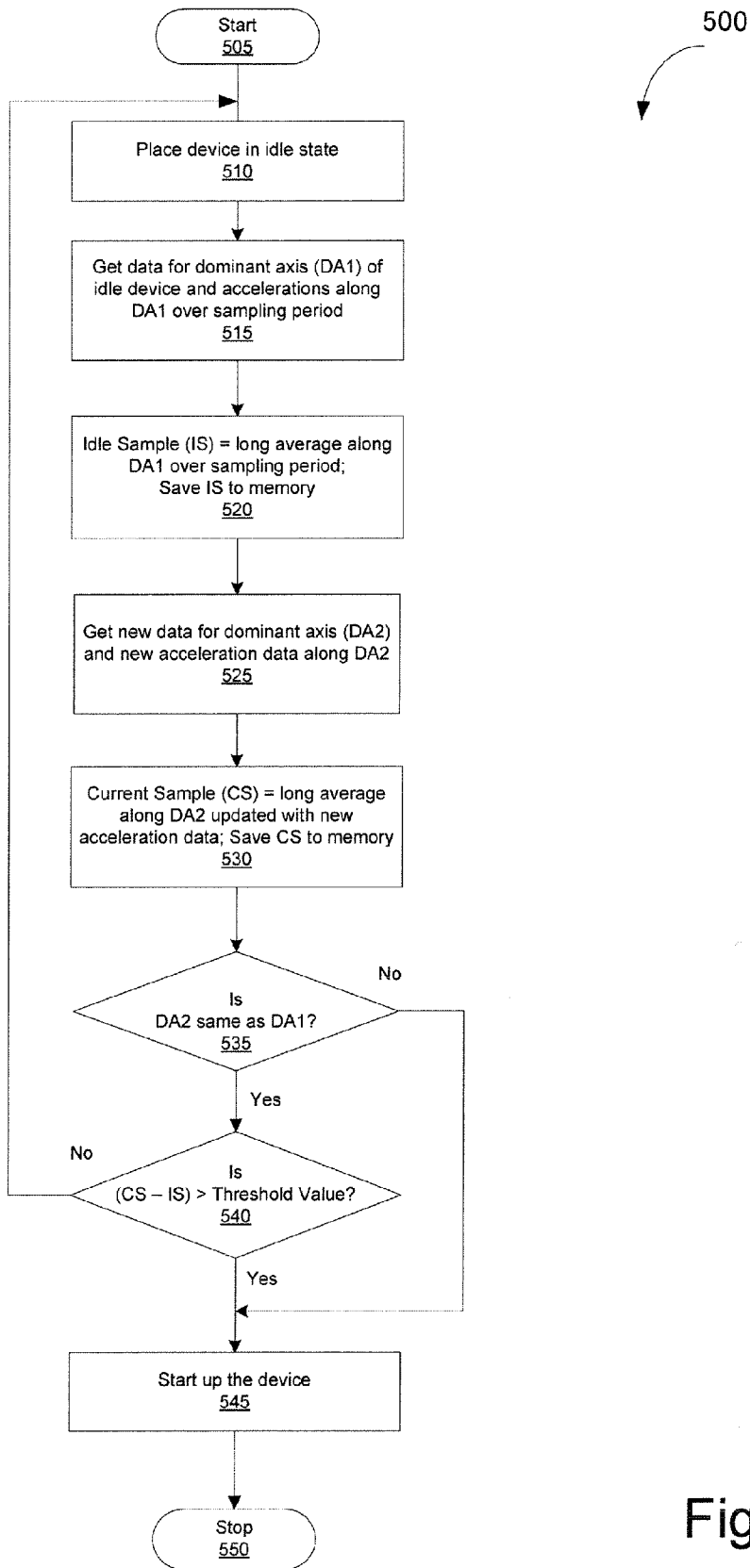


Figure 5

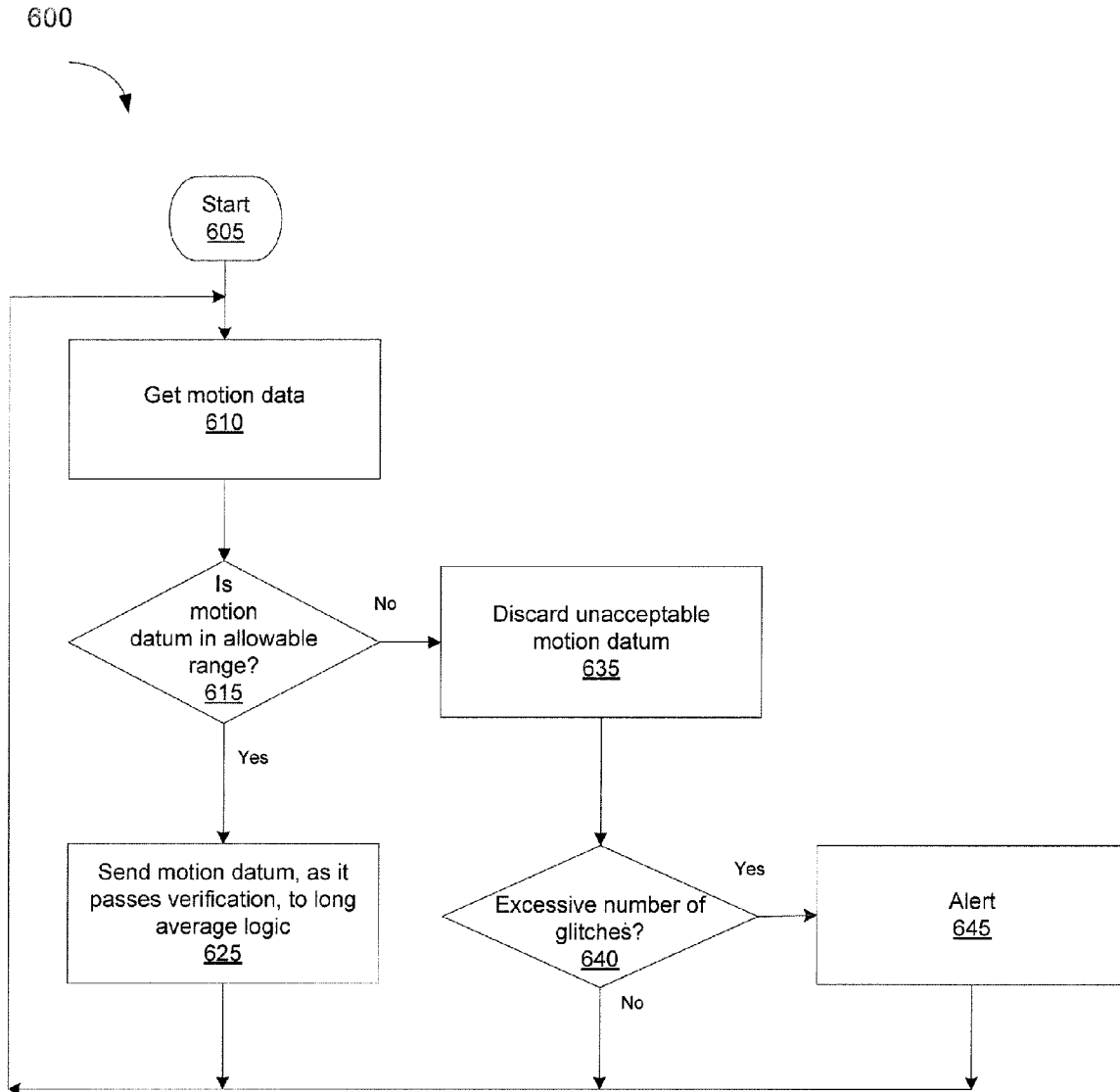


Figure 6

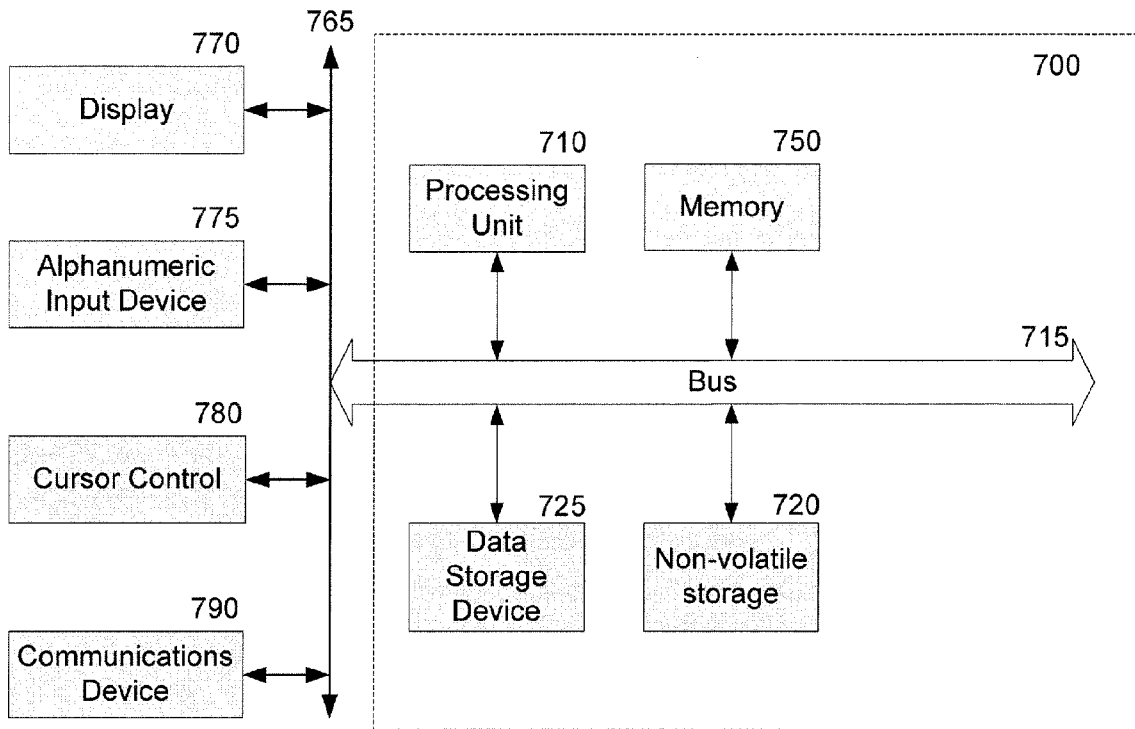


Figure 7

METHOD AND SYSTEM FOR WAKING UP A DEVICE DUE TO MOTION

FIELD OF THE INVENTION

This invention relates to a method and system for waking up a device from an idle state.

BACKGROUND

Technological progress has led to the proliferation of commercial electronic devices such as portable computers, game controllers, GPS devices, digital cameras, cellular telephones, and personal media players. Continuous improvements have allowed the users to enjoy many features and possible uses from a single mobile device. However, generally, the more applications a mobile device has, the faster the battery of the mobile device depletes. Therefore, it can be difficult to maximize battery life and provide a great user experience at the same time.

SUMMARY OF THE INVENTION

The present invention provides a method and system to wake up a device due to motion. The system determines a dominant axis of a device. The device is placed in an idle state, after a period of inactivity or lack of motion. A sensor, such as an accelerometer, registers a motion of the device. A computation logic analyzes the motion data to determine if the motion data indicates a real motion. If so, the device is woken up.

BRIEF DESCRIPTION OF THE DRAWINGS

The present invention is illustrated by way of example, and not by way of limitation, in the figures of the accompanying drawings and in which like reference numerals refer to similar elements and in which:

FIG. 1 is an illustration of one embodiment of moving a device that may require waking up the device.

FIG. 2 is a block diagram of one embodiment of a system.

FIG. 3 is a flowchart of one embodiment of determining whether to wake up a device based on motion data.

FIG. 4 is a flowchart of one embodiment of a process to create a long average of accelerations.

FIG. 5 is a flowchart of one embodiment of a process for determining whether a device should be woken up from an idle state.

FIG. 6 is a flowchart of one embodiment of a process to detect and correct glitches in motion data.

FIG. 7 is a block diagram of one embodiment of a computer system that may be used with the present invention.

DETAILED DESCRIPTION

A method and system for waking up a device due to motion of the device is described. Embodiments of the present invention are designed to determine if a device should be woken up from an idle state based on the analysis of motion data. In one embodiment, motion data for the dominant axis is analyzed and the device is woken up from idle state if the motion data analysis points to the motion being “real” motion as opposed to a mere jostle or glitch.

The following detailed description of embodiments of the invention makes reference to the accompanying drawings in which like references indicate similar elements, showing by way of illustration specific embodiments of practicing the

invention. Description of these embodiments is in sufficient detail to enable those skilled in the art to practice the invention. One skilled in the art understands that other embodiments may be utilized and that logical, mechanical, electrical, functional and other changes may be made without departing from the scope of the present invention. The following detailed description is, therefore, not to be taken in a limiting sense, and the scope of the present invention is defined only by the appended claims.

FIG. 1 is an illustration of one embodiment of moving an idle device that may result in waking up the device. The idle state is defined, in one embodiment, as a state in which the device is not moving, and there is no active application which includes user interaction/display. In one embodiment, there may be multiple levels of idle state, e.g. where various subsystems are placed in a power-reduced state or not. When the device is in the idle state, the device is placed in low-power mode. In this state, there is sufficient power maintained to monitor at least one sensor. However, other elements and applications are turned off to extend the battery life of the device. In one embodiment, some applications may remain active. For example, the device may be in the idle state, but continue a download, utilizing a network and memory store. In one embodiment, if at least one subsystem is turned off due to lack of device motion, this may be considered an “idle state.”

In one embodiment, after a device 110 is placed on a horizontal surface 115 such as a desk or chair, after a period of inactivity the device 110 goes to the idle state to conserve the battery. In one embodiment, the device is placed into the pocket, purse, bag, or any other non-moving location, the device enters the idle state.

The system, in one embodiment, is designed to ensure that when the device is picked up by a user, the device is moved from the idle state to an active state rapidly. By initiating the transition from the idle state to the active state without requiring user input, the user wait is reduced. For example, when a user 100 picks up the device 110 from its position on the horizontal surface 115, the device is designed to wake up. In one embodiment, the device 110 is woken up from idle state and the user is presented the last active state of the device. In one embodiment, this may be sufficiently rapid that by the time the device is being viewed by the user, the prior state has been restored. In contrast, if the table on which the device is resting is shaken, or the purse is jostled, the device should not wake up. This reduces power usage, because the device is not continuously being woken up from small motions which occur when someone walks near a table, sits down, or similarly causes small motions.

FIG. 2 is a block diagram illustrating one embodiment of a system 200 of the present invention. In one embodiment, the system 200 is a portable electronic device. The system 200 in one embodiment comprises motion sensor logic 210, sample period logic 230, glitch correcting logic 235, long average logic 240, dominant axis logic 245, memory 250, computation logic 255, and configuration logic 260.

In one embodiment, the motion sensor logic 210 comprises an accelerometer 220. In one embodiment, the motion sensor logic 210 also includes one or more additional sensors, such as orientation sensor 215.

In one embodiment, accelerometer 220 may be used to determine orientation of the device. The orientation may be determined using long averages of accelerations. The sample period logic 230 determines how frequently the motion sensor logic 210 obtains data. In one embodiment, the sample

period is preconfigured. In one embodiment, the sample period is adjusted based on the application(s) using the sensor data.

The accelerometer 220 periodically samples motion data. The long average logic 240 calculates an average of the acceleration data over the sample period. In one embodiment, the long average logic 240 calculates the average of the accelerations over a number of measurements, rather than over a time period. In one embodiment, the long average logic 240 calculates accelerations over 5 minutes. In one embodiment, the long average logic 240 calculates accelerations over 20 measurements.

In one embodiment, the acceleration data is sent to the glitch correcting logic 235, where the data is analyzed to determine if any it represents a glitch, i.e., data outside a pre-determined range of acceptable data. For example, it is extremely unlikely if not impossible for motion data to go from zero acceleration to 10 m/s acceleration in one reading. In one embodiment, the pre-determined range of data is a predetermined change in acceleration from a current acceleration. For example, if the device is idle—e.g. not moving—the range of accelerations possible for the device is fairly limited. In one embodiment, glitch correcting logic 235 further may be used to discard non-human motions. For example, if the device is not being used but is in a moving vehicle, in one embodiment the vehicle's motion can be discarded as not fitting the signature of human motion.

In one embodiment, the glitch correcting logic 235 discards any abnormal accelerometer reading(s). In one embodiment, the non-glitch data is then passed on to the long average logic 240. In another embodiment, the glitch data is from the long average by glitch correcting logic 235. In one embodiment, if a certain number of glitch data points have been discarded, glitch notifier logic 237 notifies the user. In one embodiment, glitch notifier logic 237 may also notify the manufacturer. The glitches generally are indicative that the accelerometer or sensor is malfunctioning.

The long average logic 240 calculates one or more long averages of acceleration based on the received motion data. In one embodiment, the long average logic 240 utilizes a ring buffer memory 250, discarding older data as new data is added to the long average. In one embodiment, the long average logic 240 creates a long average of accelerations along a single axis. In one embodiment, the dominant axis—defined as the axis most impacted by gravity—is used by the long average logic 240. In one embodiment, the axis corresponds to one of the axes of the accelerometer. In one embodiment, the axis is defined as the orientation experiencing the most pull from gravity. In one embodiment, the long average logic 240 creates long averages of accelerations along multiple axes.

Determining the orientation of an electronic device may include identifying a gravitational influence. The axis with the largest absolute long average may be the axis most influenced by gravity, which may change over time (e.g., as the electronic device is rotated). Therefore, a new dominant axis may be assigned when the orientation of the electronic device and/or the inertial sensor(s) attached to or embedded in the electronic device changes.

In one embodiment, the actual axis with the largest absolute long average over a sample period is assigned as the dominant axis. In alternative embodiment, the dominant axis does not correspond to one of the actual axes of the inertial sensor(s) in a current orientation, but rather to an axis that is defined as approximately aligned to gravity. In one embodiment, the dominant axis corresponds to a virtual axis that is a component of a virtual coordinate system. In one embodi-

ment, a true gravity assessment, such as by doing trigonometric calculations on the actual axes based on the gravitational influence is performed to determine orientation.

In one embodiment, a long average of accelerations is computed by the long average logic 240 when the device goes into idle state after a period of inactivity. In one embodiment, the long average and the dominant axis for which it is computed are received by computation logic 255. The computation logic 255 also receives, based on a new sample of motion data, a current dominant axis and an updated current long average for the current dominant axis.

If the prior and current dominant axes are the same, the computation logic 255 determines if the long average has changed by more than a predetermined threshold. In one embodiment, when the change in the dominant axis is larger than the threshold value, the computation logic 255 communicates with the power logic 265 and the device state logic 270, to power up the device and restore the last active device state. If the change in the dominant axis is not larger than the threshold value, the device is maintained in the idle state.

In one embodiment, if the new dominant axis is different from the prior dominant axis, the computation logic 255 communicates with the power logic 265 and configuration logic 260 to restore the device to the last active device state.

FIG. 3 is a flowchart of one embodiment of determining whether to wake up a device based on motion data. At block 305, the process starts. In one embodiment, the process runs continuously. In one embodiment, the user may initiate the auto-wake-up system, or set a preference to have the auto-wake-up system on.

At block 310, the process determines if it is time to sample motion data. In one embodiment, the motion data is sampled periodically. If it is time to sample motion data, the process continues to block 315. Otherwise, the process returns block 310.

At block 315, the process gets sample motion data. In one embodiment, based on the sample motion data, at least one current/updated long average of accelerations is calculated. In one embodiment, the long average is based on a preset number of measurements, or on a preset time. The process continues to block 320.

At block 320, the process determines whether the device is in idle state. In one embodiment, the device is placed in idle state after the device has been inactive for a period of time. Inactive, in one embodiment, means that the device is not moving and that there are no user-interactive applications active on the device. In one embodiment, when the device is placed in idle state, a long average is initialized. If the device is not in idle state, the process returns to block 310. If the process determines that the device is in idle state, the process continues to block 325.

At block 325, the process determines if the device has experienced any motion, e.g. there is a difference between the readings of the accelerometer that are larger than a minimum threshold. In one embodiment, this determination is made by using a filter to remove accelerometer motions below the minimum threshold. If the process determines that no motion has been detected, the process returns to block 310. If the process determines that the accelerometer data indicates a movement of the device, the process continues to block 330.

At block 330, the process determines if the movement is a "real" motion and not a mere jostle or bump. The device may move, for example, as a result of a little jostle of a desk or table on which the device is laying, a heavy step nearby, or something else that creates a very small motion, but which does not warrant waking up the device. In contrast, the device may move as a result of being picked up by a user intending to use

the device. In this case, the movement is a “real” motion which warrants awakening the device.

If the motion is not a “real” motion, the process returns to block 310. If the movement is a “real” motion, the process continues to block 335. At block 335, the process wakes up the device. The process continues to block 340.

At block 340, the process in one embodiment configures the device to restore the last device state when the device was active. In one embodiment, the system allows the user to customize the wake-up restoration of the device. For example, the user may customize the system not to start the previously-active applications, but to present a home screen. The process then ends.

FIG. 4 is a flowchart of one embodiment of a process to create a long average of accelerations. The process 400 starts at block 405. In one embodiment, this process is continuously running when the device is powered.

At block 410, the long average logic, in one embodiment, receives motion data from the accelerometer. In one embodiment, the long average logic receives the data from a glitch correcting logic which removes abnormal data from the motion data before the motion data is passed to the long average logic. The process continues to block 415.

At block 415, the long average logic adds the sampled motion data to the long average, to create an updated long average of accelerations. In one embodiment, the long average logic maintains a long average only for the dominant axis (e.g., the axis on which the gravitational effect is detected). In another embodiment, the long average logic maintains an average for one or more axes. The process continues to block 420.

At block 420, the long average logic, in one embodiment, optionally sends the long averages of accelerations for a plurality of axes to the dominant axis logic for determination of the dominant axis. In an alternative embodiment, the dominant axis logic retrieves the long averages of accelerations for a plurality of axes from memory to determine the dominant axis. The process then returns to block 410, to continue receiving motion data.

FIG. 5 is a flowchart of one embodiment of a process 500 for determining whether a device should be woken up from an idle state. The process starts at block 505. In one embodiment, the process is activated when a preset period with no motion has been detected.

At block 510, the process places the device in idle state after the device has been inactive for a period of time. The process continues to block 515.

At block 515, the computation logic receives data for the dominant axis DA1 of the idle device and accelerations along DA1 over a sampling period, computed by the long average logic after the device becomes idle. The process continues to block 520.

At block 520, the computation logic assigns the long average of accelerations along DA1 over a period to Idle Sample (IS). In one embodiment, IS is saved to memory. The process continues to block 525.

At block 525, the process receives new dominant axis data DA2 and the new acceleration data along DA2. The process continues to block 530.

At block 530, the computation logic adds the new data to the long average of accelerations along DA2 to generate a Current Sample (CS). Also at block 530, in one embodiment, the computation logic saves CS to memory. The process continues to block 535.

At block 535, the computation logic compares the idle dominant axis DA1 with the current dominant axis DA2. If the current dominant axis DA2 is different from the idle

dominant axis DA1, the process continues to block 545. In one embodiment, the comparison is within a range, e.g. a minimum change of one degree has to occur to identify DA2 as being different from DA1. In one embodiment, if the dominant axis has changed, then the orientation of the device has changed, and that warrants waking up the device. If DA2 is substantially the same as DA1, then the computation logic continues to block 540.

At block 540, the computation logic determines if the long average along the dominant axis has changed by more than a threshold value, i.e., if the difference between the Current Sample value and the Idle Sample value is larger than the threshold value. In one embodiment, the threshold value is set to 30, which is approximately a 10^{th} of a g. If the difference between IS and CS is less than the threshold value, the process returns to block 510, to continue monitoring the idle state. CS becomes IS, for the next calculation.

If the computation logic determines that the change in the long average of accelerations along the dominant axis is greater than the threshold, then the computation logic continues to block 545. At block 545, the computation logic communicates with the power logic of the configuration logic to start up the device. The process then ends.

FIG. 6 is a flowchart of an embodiment of a process 600 to detect and correct glitches in motion data. In one embodiment, this process is always active. In one embodiment, this process is active when the device is in the idle state. In one embodiment, the glitch correction takes place before the motion data is added to the long average. The process starts at block 605.

At block 610, the glitch correcting logic receives motion data from an accelerometer.

At block 615, the glitch correcting logic determines if the received motion data contains a glitch. In one embodiment, a glitch is a datum that indicates a motion outside an acceptable range. For example, it is extremely unlikely that a device would go from idle (e.g., no motion) to moving at an acceleration of 64 feet per second squared (equivalent to 2 g). The correcting logic examines each datum against a range of acceptable data to determine if the datum falls within this range and, therefore, should be used in calculating the long average of accelerations. In one embodiment, the glitch correction logic utilizes the change in acceleration between two readings to determine whether there is a glitch.

If the glitch correcting logic determines that the motion data is not a glitch, the glitch correcting logic continues to block 625.

At block 625, the glitch correcting logic sends the motion data to the long average logic. The process then returns to block 610, to continue monitoring the acceleration data.

If at block 615, the glitch correcting logic determines that the motion data is outside the allowable range, the glitch correcting logic continues to block 635.

At block 635, the glitch correcting logic discards the unacceptable motion data. At block 640, the process determines whether there have been an excessive number of glitches. In one embodiment, the glitch correcting logic uses the motion data to detect a possible problem with the accelerometer. In one embodiment, an excessive number of glitches may indicate a problem with the accelerometer. If the process determines that there have been an excessive number of glitches, the process, at block 645, generates an alert regarding the problem. In one embodiment, the alert may be a message to alert the user of the device. In one embodiment, the alert may be a notification to one or more recipients via a network

connection. For example, the system may notify a service provider, manufacturer, or other appropriate notification target.

The process then returns to block 610, to continue monitoring the acceleration data.

FIG. 7 is a block diagram of one embodiment of a computer system that may be used with the present invention. It will be apparent to those of ordinary skill in the art, however that other alternative systems of various system architectures may also be used. The computer system may include a bus or other internal communication means 715 for communicating information, and a processor 710 coupled to the bus 715 for processing information. The system further comprises a random access memory (RAM) or other volatile storage device 750 (referred to as memory), coupled to bus 715 for storing information and instructions to be executed by processor 710. Main memory 750 also may be used for storing temporary variables or other intermediate information during execution of instructions by processor 710. In one embodiment, the system also comprises a read only memory (ROM) and/or static storage device 720 coupled to bus 715 for storing static information and instructions for processor 710, and a data storage device 725 such as a flash memory, magnetic disk, optical disk and its corresponding disk drive. Data storage device 725 is coupled to bus 715 for storing information and instructions.

The system may include various input/output devices, such as a screen, audio output, keyboard, button, mouse, etc. These I/O devices may also be coupled to bus 715 through bus 765 for communicating information and command selections to processor 710. Another device, which may optionally be coupled to computer system 700, is a communication device 790 for accessing other nodes of a distributed system via a network. The communication device 790 may include any of a number of commercially available networking peripheral devices such as those used for coupling to an Ethernet, token ring, Internet, or wide area network. The communication device 790 may further be a null-modem connection, a wireless connection mechanism, or any other mechanism that provides connectivity between the computer system 700 and the outside world. Note that any or all of the components of this system and associated hardware may be used in various embodiments of the present invention. It will be appreciated by those of ordinary skill in the art that any configuration of the system may be used for various purposes according to the particular implementation. The control logic or software implementing the present invention can be stored in main memory 750, mass storage device 725, or other storage medium locally or remotely accessible to processor 710.

It will be apparent to those of ordinary skill in the art that the system, method, and process described herein can be implemented as software stored in main memory 750 or read only memory 720 and executed by processor 710. This control logic or software may also be resident on an article of manufacture comprising a computer readable medium having computer readable program code embodied therein and being readable by the mass storage device 725 and for causing the processor 710 to operate in accordance with the methods and teachings herein.

The present invention may also be embodied in a handheld or portable device containing a subset of the computer hardware components described above. For example, the handheld device may be configured to contain only the bus 715, the processor 710, and memory 750 and/or 725. The present invention may also be embodied in a special purpose appliance including a subset of the computer hardware components described above. For example, the appliance may

include a processor 710, a data storage device 725, a bus 715, and memory 750, and only rudimentary communications mechanisms, such as a small touch-screen that permits the user to communicate in a basic manner with the device. In general, the more special-purpose the device is, the fewer of the elements need be present for the device to function. In some devices, communications with the user may be through a touch-based screen, or similar mechanism.

It will be appreciated by those of ordinary skill in the art that any configuration of the system may be used for various purposes according to the particular implementation. The control logic or software implementing the present invention can be stored on any machine-readable medium locally or remotely accessible to processor 710. A machine-readable medium includes any mechanism for storing or transmitting information in a form readable by a machine (e.g., a computer). For example, a machine readable medium includes read-only memory (ROM), random access memory (RAM), magnetic disk storage media, optical storage media, flash memory devices. In one embodiment, the system may be embodied in a signal, such as an electrical, optical, acoustical or other forms of propagated signal (e.g., carrier waves, infrared signals, digital signals, etc.).

In the foregoing specification, the invention has been described with reference to specific exemplary embodiments thereof. It will, however, be evident that various modifications and changes may be made thereto without departing from the broader spirit and scope of the invention as set forth in the appended claims. The specification and drawings are, accordingly, to be regarded in an illustrative rather than a restrictive sense.

What is claimed is:

1. A method comprising:

receiving motion data from a motion sensor in a device, the motion sensor sensing motion along three axes;
verifying whether the motion data includes one or more glitches and removing the one or more glitches from the motion data;

determining an idle sample value for a dominant axis of the device, the dominant axis defined as the axis with a largest effect from gravity among the three axes, the idle sample value comprising an average of accelerations over a sample period along the dominant axis recorded when the device goes to idle mode after a period of inactivity;

registering a motion of the device based on the motion data from the motion sensor;
determining whether the motion caused a change in the dominant axis; and

waking up the device when the motion of the device indicates the change in the dominant axis of the device, the dominant axis being the axis with the largest effect from gravity among the three axes.

2. The method of claim 1, wherein determining the idle sample value for the dominant axis comprises:

processing the motion data to establish the idle sample value; and
processing the idle sample value to establish the dominant axis.

3. The method of claim 1, wherein the motion sensor comprises an accelerometer.

4. The method of claim 2, further comprising determining the idle sample value for each of the other axes of the device.

5. The method of claim 1, wherein registering the motion of the device comprises:

processing the motion data to determine a current sample value along the dominant axis of the device.

9

6. The method of claim 5, further comprising comparing a difference between a current sample value along the dominant axis determined based on the motion of the device and the idle sample value of the dominant axis against a threshold value.

7. The method of claim 1, wherein the change in the dominant axis comprises a change in acceleration along the dominant axis.

8. The method of claim 1, wherein waking up the device further comprises configuring the device to return to a last active device state.

9. The method of claim 5, wherein the current sample value of the dominant axis of the device is an average of accelerations over a sample period.

10. The method of claim 5, further comprising determining the current sample value for each of the other axes of the device.

11. The method of claim 5, further comprising determining that the device is to be woken up based on the difference between the current sample value and the idle sample value being greater than a threshold value.

12. The method of claim 7, further comprising:

determining a new dominant axis based on the motion data received from the motion sensor;

computing a difference between the current sample value along the new dominant axis and an idle sample value along the new dominant axis determined when the device goes to idle mode after a period of inactivity; and comparing the difference against a threshold value to establish whether to wake the device up.

13. A mobile device comprising:

a motion sensor to sense motion along three axes and generate motion data;

a glitch corrector to determine whether the motion data includes one or more glitches and removing the one or more glitches from the motion data;

a dominant axis logic to determine an idle sample value for a dominant axis of the mobile device based on the motion data, the dominant axis defined as an axis with a largest effect from gravity among three axes, and the idle sample value comprising an average of accelerations over a sample period along the dominant axis recorded when the device goes to idle mode after a period of inactivity;

a computation logic to determine whether the motion caused a change in the dominant axis; and

a power logic to wake up the device when the motion of the device indicates a change in the dominant axis of the

10

device, the dominant axis being the axis with the largest effect from gravity among the three axes.

14. The mobile device of claim 13, further comprising: a long average logic to calculate an average of accelerations over a sample period.

15. The mobile device of claim 14, further comprising: the dominant axis logic further to compare a difference between a current sample value along the dominant axis determined based on the motion of the device and the idle sample value of the dominant axis against a threshold value.

16. The mobile device of claim 14, wherein waking up the device further comprises configuring the device to return to a last active device state.

17. The mobile device of claim 13, wherein the motion sensor logic comprises an accelerometer to detect acceleration along one or more axes.

18. The mobile device of claim 13, further comprising a device state logic to restore the device to a last active state.

19. The mobile device of claim 18, wherein the device state logic allows user interaction to customize applications to be displayed when the device is woken up.

20. A system to wake up a mobile device comprising:

a motion sensor to detect motion along three axes and generation motion data;

a glitch corrector to determine whether the motion data includes one or more glitches and remove the one or more glitches from the motion data;

a dominant axis logic to determine an idle sample value, comprising an average of accelerations over a sample period along a dominant axis, the dominant axis defined as an axis with a largest effect of gravity among the three axes; and

a power logic to move the device from the inactive state to an active state upon detection of a change in the dominant axis which is the axis experiencing the largest effect of gravity.

21. The system of claim 20, further comprising:

a long average logic to calculate an average of accelerations over a sample period, for accelerations along the dominant axis; and

a computation logic to determine if the average of accelerations indicates the change in the dominant axis of the device.

22. The system of claim 20, further comprising:

a device state logic to restore the device to one of: a last active state, a preset customized state.

* * * * *